



## Rehman Medical Institute

5-B/2, Phase 5 Hayatabad, Peshawar  
Khyber Pakhtunkhwa 25000



UAN: 111-REHMAN (734626)  
Phone: +92-91-5838038  
Fax: +92-91-5838333  
Email: [info@rmi.edu.pk](mailto:info@rmi.edu.pk)

[f](#) [@](#) [d](#) /RMIEducation [x](#) /EducationRMI  
[www.rmi.edu.pk](http://www.rmi.edu.pk)



2023-24

**RMI**  
EDUCATION

TRANSFORMING  
HEALTHCARE

# PROSPECTUS



**RMC**  
REHMAN  
MEDICAL COLLEGE

**RCD**  
REHMAN COLLEGE OF  
DENTISTRY

**RCN**  
REHMAN COLLEGE OF  
NURSING

**RCRS**  
REHMAN COLLEGE OF  
REHABILITATION SCIENCES

**RCAHS**  
REHMAN COLLEGE OF  
ALLIED HEALTH SCIENCES

# WALK THROUGH OF THIS PROSPECTUS

Welcome to Rehman Medical Institute (RMI), home to hundreds of healthcare professionals and medical academicians. At RMI, we provide best possible care to our patients and delivering top-notch services to all stakeholders. Our commitment to excellence is evident through our round-the-clock availability, ensuring that our services are accessible whenever needed.

This prospectus aims to showcase the seamless integration of all major services, departments, and facilities within RMI, encompassing both RMI Healthcare and RMI Education. Together, these entities form a cohesive unit that prioritizes the well-being of our patients and the advancement of medical education.

RMI Healthcare comprises of a General Hospital and a Specialist Hospital with more than 35 medical and surgical services. The Centres of Excellence include Cardiology, Cardiothoracic Surgery, Interventional Radiology, Centre for Reproductive Medicine, Centre for Genomic Sciences and Clinical Dentistry. Along with medical and surgical services, RMI further offers Rehabilitation Services, Diagnostic Services, Ancillary Services and Quality Control of Clinical Services.

RMI Education has five colleges, Rehman Medical College (RMC), Rehman College of Dentistry (RCD), Rehman College of Allied Health Sciences (RCAHS), Rehman College of Nursing (RCN), and Rehman College of Rehabilitation Sciences (RCRS). RMI educational Institutions provide programmes and courses at both Undergraduate as well as Postgraduate levels.

RMI colleges are equipped with state-of-the-art infrastructure facilities, including libraries, laboratories, and qualified faculty. The colleges emphasis research-based studies, aiming to explore new areas of medical studies and develop innovative solutions. Students also

benefit from an online Learning Management System (LMS) for enhanced learning experiences. Additionally, RMI educational institutes offer valuable clinical experiences at different levels. The institutes maintain a research-focused approach, encouraging exploration and the pursuit of best possible conclusions in medical studies. Professionals and students at RMI publish their research in Journal of Rehman Medical Institute, and Journal of Medical Students (JMS), those RCD in Journal of Rehman College of Dentistry (JRCDD) and for Allied Health Colleges, there is Rehman Journal of Health Sciences (RJHS) and many other national and international journals.

RMC is recognised by Pakistan Medical & Dental Council (PM&DC) and is affiliated with Khyber Medical University, Peshawar. RMC is known for its well qualified and competent faculty providing innovative learning, along with state-of-the-art infrastructure and clinical departments. All students are exposed to clinical rotations for training, maintaining an excellent regulatory and disciplinary learning environment.

RCD is one of the leading dental education providers producing knowledgeable, ethical, and competent dental professionals with clinical experience and leadership qualities. At RCD, students are prepared to treat dental problems through evidence based dental care in different dental arenas. RCN is dedicated to produce best nursing professionals who are well trained and can work in the field of research, public health, education, and healthcare industry. The college is affiliated with Khyber Medical University, Peshawar, and Nursing Examination Board, Khyber Pakhtunkhwa. All students are exposed to practice-based learning environment in addition to class teachings, seminars and research.

These colleges cater for  
**16 degree programs**  
that you would like to  
choose from.

RCAHS is one of the leading Allied Health College offering six programmes in different paramedical fields. The college has some of the best labs working through best clinical practices, excellence in education and research. RCAHS believes in both personal and professional growth of individuals keeping accountability, honesty, innovation, integrity, professionalism, and social justice as its core values.

RCRS prioritises practical learning and the application of knowledge. The college boasts highly competent and well-qualified staff members who are dedicated to teaching and training students. RCRS has established international links with Queens Margaret University, UK, allowing outstanding achievers from the college to gain exposure and learn modern techniques and procedures in the field of Rehab Sciences during their time in the UK.

Individual programme details and requirements are located within each college that caters for the course.

Regulations/ Regulatory Authority Demand: Constraints  
The regulatory bodies prescribe certain regulations for admissions which is obligatory for the RMI Colleges to follow.

**Admission Process Facilitation:**  
Portal [www.admissions.rmi.edu.pk](http://www.admissions.rmi.edu.pk)  
Facilitates the online admission application and provides with the necessary information about the application submission.





# TABLE OF CONTENTS

PAGE 56	<b>RMC</b> REHMAN MEDICAL COLLEGE	PAGE 78	<b>RCD</b> REHMAN COLLEGE OF DENTISTRY	PAGE 96	<b>RCN</b> REHMAN COLLEGE OF NURSING	PAGE 118	<b>RCAHS</b> REHMAN COLLEGE OF ALLIED HEALTH SCIENCES	PAGE 154	<b>RCRS</b> REHMAN COLLEGE OF REHABILITATION SCIENCES
------------	---	------------	--	------------	--	-------------	---	-------------	---

## Healthcare

Introduction	01
Mission,Vision & Authorities	05
Message From Founder & Chairmen	07
Healthcare	08
Universal Health Coverage	09
RMI Centres of Excellence	10
Cardiology & Cardiothoracic Surgery	10
Kidney Transplant	10
Interventional Radiology	10
Centre of Reproductive Medicine	10
Centre of Genomic Sciences	10
Dental Services	11
Surgical & Allied Services	11
Rehabilitation Services	11
Diagnostic Services	11
Pathology Lab	11
Radiology/Diagnostic Imaging	11
Endoscopic Facilities	11
Ancillary Services	12
Clinical Trials Unit	14

## Education

Postgraduate Medical Programmes	16
Education	20
Undergraduate Programmes	24
Admissions RMI Colleges	27
Online Admission Portal	27
Scholarships & Financial Assistance	28
Library Resources	29
Campus Facility for Students	34
Academic Offices	38
Committees	39
Research	41
Student Magazines	42
Journals	44
Rules & Regulations	47
Examination Rules	52





# INTRODUCTION

Rehman Medical Institute (RMI), Peshawar, is a Private Limited Company, commencing its operations in February 2002. It has grown tremendously since then and can claim to be the best-equipped organisation providing state-of-the-art facilities and services in the region as the umbrella for its constituent healthcare and educational divisions.



# RMI HEALTHCARE

RMI Healthcare encompasses two major facilities, namely RMI Specialist Hospital and RMI General Hospital, both located at the gateway of the historic Khyber Pass in Peshawar. These hospitals represent the largest and most advanced tertiary care private healthcare institutions in the province. Equipped with over 500 beds, they offer state-of-the-art facilities and a dedicated team of highly qualified and compassionate staff to ensure optimal patient care.

To support clinical and educational endeavors, RMI has incorporated modern diagnostic facilities that benefit both patients and undergraduate / postgraduate students. The hospitals are not only a healthcare hub for diverse regions of Pakistan, including Khyber Pakhtunkhwa and Northern Areas, but also extend quality healthcare services to patients from neighboring countries such as Afghanistan and the Middle East.

Adhering to our slogan, we continually strive to set new benchmarks in healthcare, providing an unprecedented level of service to the people in this region.







# RMI EDUCATION

RMI Education provides a common platform for all the medical, dental, and paramedical educational services including undergraduate colleges, training programmes, and national and international alliances.

This umbrella setup facilitates all RMI educational colleges in academics and promoting academic quality management. It provides the coordinating skeleton between individual colleges and RMI central administrative departments. It also approves the budgeting for individual institutions and provides for coordinated organisational functions.

All admissions in the RMI colleges are conducted through the Office of Admissions that is run by Central Admissions Committee. The Co-Curricular activities are given a paramount role through an Executive Committee reflecting and grooming on the generic talents of students.

Rehman Medical College (RMC), Rehman College of Dentistry (RCD), Rehman College of Nursing (RCN), Rehman College of Rehabilitation Sciences (RCRS), and Rehman College of Allied Health Sciences (RCAHS) are situated in RMI Campus to train Medical, Dental, Nursing, Rehabilitation Sciences, and Health Technology professionals respectively with sound applied knowledge, world class competence, and professionalism, through its 14

approved degree programmes, and 02 diploma programmes.

Furthermore, 09 postgraduate programmes have been registered with the Higher Education Regulatory Authority (HERA).

Educational institutions remain dedicated to providing and improving access to high quality and cost-effective trainings conforming to global best practices.

Educational degree programmes of RMI are affiliated with Khyber Medical University (KMU) Peshawar. Academic activities follow the guidelines provided by KMU and the HEC Undergraduate Education Policy 2021.

The dynamics and the details of the studies are adjusted according to institutional curriculum design. Any change in prescribed guidelines by the regulatory authorities are adjusted and applied accordingly.

The curriculum and assessment rules and regulations of KMU are applicable.

Training in FCPS & MCPS Postgraduate programmes were initiated in 2006. Currently 26 training programmes are underway in various clinical disciplines under the supervision of 44 supervisors in RMI.



# VISION

Leader in providing premium Healthcare, Education, Training and Research.



# MISSION

Rehman Medical Institute is committed to offer:

- Premium Healthcare Services through best standard practices, diagnostic facilities, and treatment in a caring and safe environment.
- Career opportunities in an environment providing our employees with a purpose and pride in the organisation.
- Education, Training and Research for healthcare professionals while inculcating in them the ethics and values of professional modes of practice.

# AUTHORITIES

RMI is governed by its Board of Directors.



## Chairman Prof. Muhammad Rehman

MBBS (Pesh), FRCS (Edin), FCPS (Pak)

The Chairman is the founder and Patron of RMI.



## Chief Executive Officer Shafique Ur Rehman

MBA International Healthcare & Hospital Management Frankfurt  
School of Finance and Management, Germany

He is responsible for policy making, planning, development, monitoring, and reviewing the performance of RMI, and reporting it to the Board of Directors.

# TRANSFORMING HEALTHCARE





# Message From Founder & Chairman

Today's complex healthcare environment requires a physician to not only have in-depth knowledge of medicine but be an astute judge of human behavior with excellent communication skills and a humane approach towards the practice of medicine. These competencies impact every aspect of curriculum development at Rehman Medical Institute and its constituent colleges.

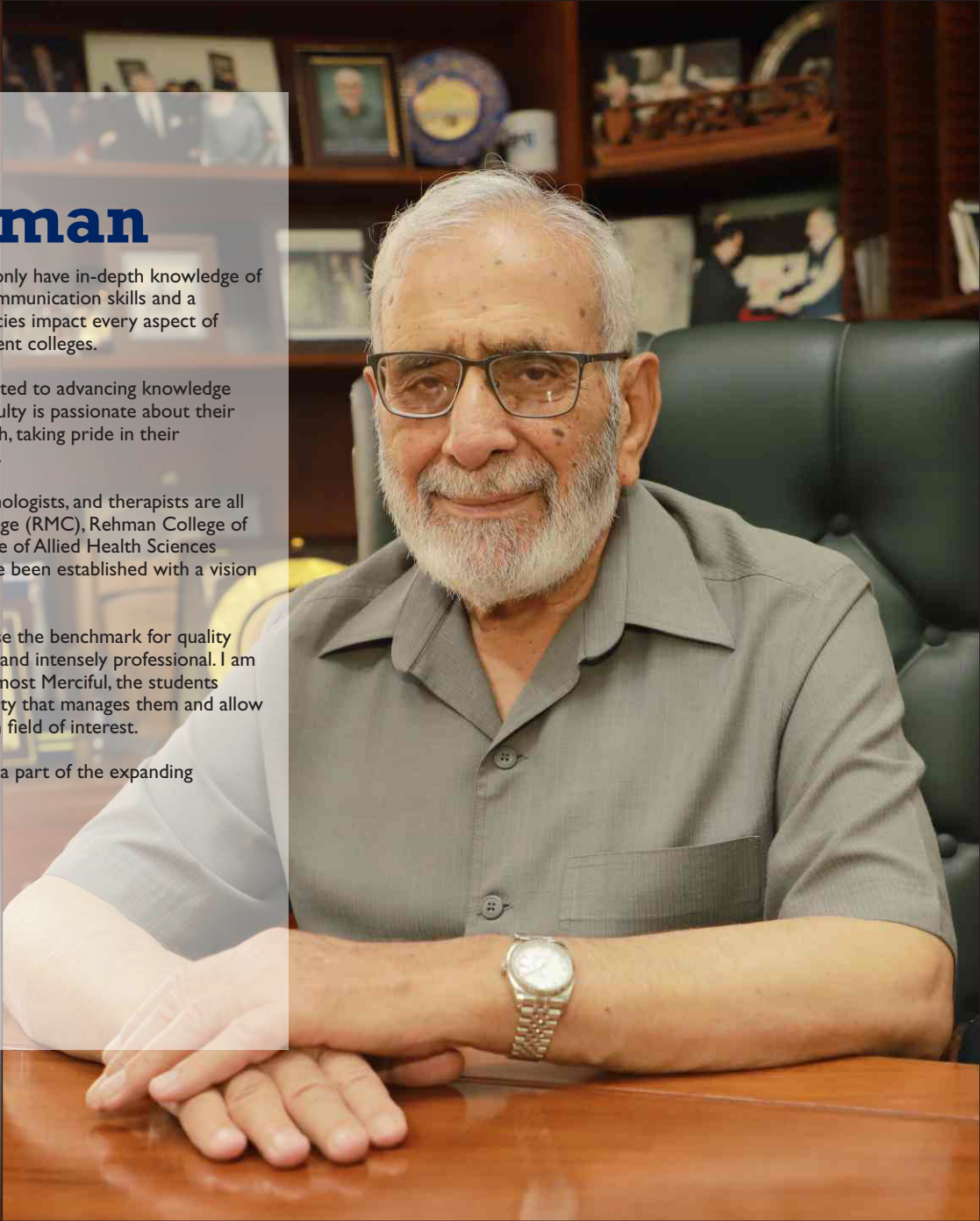
As a premier institute of higher education in the region, RMI is dedicated to advancing knowledge and humane healing through innovative educational methods. Our faculty is passionate about their contribution towards clinical medicine, character building and research, taking pride in their commitment to educating the next generation of health professionals.

Provision of quality healthcare is a team effort; clinicians, nurses, technologists, and therapists are all integral components of this team which is why Rehman Medical College (RMC), Rehman College of Dentistry (RCD), Rehman College of Nursing (RCN), Rehman College of Allied Health Sciences (RCAHS) and Rehman College of Rehabilitation Sciences (RCRS) have been established with a vision to change the landscape of health education in the region.

Like Rehman Medical Institute, the aim of these programmes is to raise the benchmark for quality education in all these areas and provide training that is both rigorous and intensely professional. I am confident that with grace of Allah, the Almighty, most Beneficent and most Merciful, the students enrolled in all these Programs shall benefit from the professional faculty that manages them and allow them to realize their full potential, reaching distinction in their chosen field of interest.

I wish the best of luck to all aspiring candidates who wish to become a part of the expanding community of Rehman Medical Institute.

**Professor**  
**Dr. Muhammad Rehman**  
Chairman and Founder  
**RMI**



# TRANSFORMING HEALTHCARE



**HEALTHCARE**  
**RMI**



Scan to Visit Website





# UNIVERSAL HEALTH COVERAGE

RMI provides the following tertiary healthcare services through one-window facility:



## Accident & Emergency Department

The Accident and Emergency Department is a 15-bed unit with attached Emergency Operation Theatre. The department is well-staffed round the clock by a competent team of professionals. Investigations are urgently performed, and emergency treatments are promptly administered.

## Out-Patient Consultation Clinics

- Over 100 consultant clinics are operational in mornings and evenings.
- 24/7 Acute Care services
- Comfortable waiting lounges facilitate patients and their attendants
- Executive Healthcare Centre



## Home Based Services

- Physical Therapy & Rehabilitation
- Laboratory Investigations
- Telemedicine Clinics
- Home Nursing Services
- Acute Care
- Pharmacy

## In-Patient Facilities

A variety of inpatient units / rooms are available. Patients are monitored by centralised nursing stations, equipped with efficient nursing and allied medical staff. Paramount health care is maintained through a Quality Monitoring Team. Patients have access to managed care (Sehat Card).



# RMI CENTRES OF EXCELLENCE

## Cardiology, Cardiothoracic, Vascular Surgery

RMI is a leading cardiac and vascular care service provider in the region. It provides an extensive range of preventive, diagnostic, and interventional services of international standards, including outpatient consultations, echocardiography, exercise testing, angiography, and 24/7 percutaneous coronary revascularization (angioplasty), and a variety of cardiac and vascular surgical procedures.

## Kidney Transplant

RMI Kidney Transplant Department has been given due recognition by MTRA, KP and has started kidney transplantation services for patients suffering from End Stage Kidney Diseases who are otherwise forced to remain on lifelong dialysis. Highly qualified transplant surgeons and their teams are dedicated for this purpose.

Thus, state-of-the-art services of international standards are available for patients in need at affordable costs.

## Interventional Radiology

The department of Interventional Radiology (IR) at RMI is the first dedicated IR center in Khyber Pakhtunkhwa.

In this center, our experts perform image guided diagnostic and therapeutic procedures for cardiovascular conditions as well as a broad range of services for patients with cancer, pain, diabetes, liver, kidney, and other conditions.

Thus, state-of-the-art services of international standards are available for patients in need at affordable costs.

## Centre For Reproductive Medicine (CRM)

RMI pioneered dedicated infertility services with the Centre for Reproductive Medicine in Khyber Pakhtunkhwa (KP).

This center caters to the need of large number of patients not only from KP but also from Afghanistan.

It provides services like In Vitro Fertilization (IVF), Intra Cytoplasmic Sperm Injection (ICSI), Intra Uterine Insemination (IUI), Infertility investigations, and counseling.

## Centre For Genomic Sciences

RMI has entered the modern world of high throughput human genetics by adding on the latest Next Generation Sequencing (NGS) facilities to the RMI Centre for Genomic Sciences.

This brings RMI up to date with international standards of human genetic diagnostics and research, and also provides patients of genetic diseases (including cancers) an advanced facility not currently available elsewhere in Pakistan.

The NGS testing facility is the only recognised option for both diagnosis and prognosis of a wide variety of cancers that can be targeted by specific gene-based drug therapy.





## Dental Services

RMI Clinical services in Dentistry provides state-of-the-art patient care in a variety of fields, as welfare, affordable, and executive categories.

- ▶ Prosthodontics
- ▶ Periodontology
- ▶ Paediatric Dentistry
- ▶ Oral Medicine
- ▶ Oral & Maxillofacial Surgery
- ▶ Operative Dentistry & Endodontics
- ▶ Orthodontics
- ▶ Implantology

## Surgical & Allied Services

- ▶ General & Laparoscopic Surgery
- ▶ Cardiac Surgery
- ▶ Thoracic Surgery
- ▶ Vascular Surgery
- ▶ Breast Surgery
- ▶ Cancer
- ▶ Reconstruction and Cosmetic Vascular Surgery
- ▶ Neurosurgery, Anaesthesiology
- ▶ Anesthesiology
- ▶ ENT Surgery
- ▶ Obstetrics & Gynaecology
- ▶ Paediatric Surgery
- ▶ Orthopedic & Spine Surgery
- ▶ Urology
- ▶ Ophthalmology
- ▶ Intensive Care
- ▶ Plastic Surgery, Hand and Cosmetic Surgery
- ▶ Major & Minor Operation Theaters
- ▶ Oral & Maxillo-Facial Surgery & Dentistry

## Rehabilitation Services

- ▶ A wide variety of specialty based Physical Therapy services including
- ▶ Pain management through Laser Therapy, Acupuncture Dry Needling
- ▶ Speech Therapy and Autism Management, Occupational Therapy
- ▶ Community Based Services: Geriatrics, Stroke, Pediatric Rehabilitation, and others
- ▶ Post-COVID Specialised Rehabilitation Pediatric Neurological Rehabilitation
- ▶ Clinic staffed with specialised Behavioral Therapist
- ▶ Neurological Therapy through Biodex Balancing
- ▶ Use of innovative and advanced techniques such as virtual reality

## Cutting-edge Diagnostic Services

A multi-storied extensive facility including Next Generation Gene Sequencing Lab & Precision Medicine Lab, performs high quality and varied diagnostic tests for accurate identification of diseases and patient health status. Quality control procedures are performed by qualified doctors and technicians to ensure accuracy and reproducibility of results.

## Pathology Lab

The Pathology Lab is equipped with a wide range of modern automated analysers in the disciplines of:

- ▶ Chemical Pathology
- ▶ Haematology
- ▶ Histopathology
- ▶ Microbiology
- ▶ Blood Banking
- ▶ Molecular Biology

## Radiology / Diagnostic Imaging

Equipped with the state-of-the-art diagnostic facilities, the Radiology department offers range of services including:

- ▶ X-Ray
- ▶ MRI
- ▶ Fluoroscopy
- ▶ Ultrasonography
- ▶ Doppler Studies
- ▶ Mammography
- ▶ Interventional Radiology
- ▶ CT Angiography

## Endoscopic Facilities

The Radiology department RMI offers a range of endoscopic diagnostic facilities including:

- ▶ 16-Bed Upper & Lower GI Endoscopy
- ▶ Per Cutaneous Nephrolithotomy (PCNL)
- ▶ Ureterorenoscopy & Lithoplasty
- ▶ Ureterorenoscopy & Lithoplasty
- ▶ ERCP
- ▶ Bronchoscopy

# ANCILLARY SERVICES

## Dialysis

A general dialysis unit with over 20 beds is equipped with sophisticated dialysis machines, cardiac monitors, ventilators, and centralised oxygen supply.

The RMI dialysis unit is also providing bedside dialysis in CCU, ICUs and to patients who are on ventilators. The Dialysis Unit provides a modern, comprehensive treatment programme for patients with End Stage Renal Disease.

Additionally, Continuous Renal Replacement Therapy (CRRT) is available and is the first of its kind in Khyber Pakhtunkhwa.

## Precision Medicine Lab

RMI was declared a constituent part of the National Centre for Big Data and Cloud Computing by the Federal Government in May 2018, to work for development of the area of Big Genomic Data and Cloud Computing at the national level.

An affiliate Precision Medicine Laboratory (PML) of the National Centre for Big Data and Cloud Computing, funded by the HEC is an addition to the gamut of RMI advanced services; it provides a multi-disciplinary approach to solve pressing medical and biologic issues.

The initial thrust of the PML was on cancer genomics and infectious diseases, which is now extending to other areas of medical research.





## Immunisation Centre

The Immunisation Centre, developed along most modern guidelines, provides the scheduled primary vaccination for infants and also offers a wide variety of other vaccines to both adults and children. The centre also offers guidance and advice on all aspects of immunization and parents are encouraged to discuss any issues with the Paediatric consultant prior to vaccination.

## Dermatology & Aesthetics

The department of Dermatology at RMI is staffed by experienced consultants providing best clinical dermatological procedures and consultation. The Aesthetics and Laser Clinic is equipped with modern equipment and machinery to cater to all aesthetics needs.

## Pharmacy

Pharmacy department provides storage, compounding, dispensing and distribution of medication to patients by qualified competent pharmacists. It also offers Pharmaceutical Research, Drug and Poison Information Services, and Education & Training.

## Quality Control of Clinical Services

Rehman Medical Institute monitors the quality of clinical services based on Good Clinical Practices (GCP) guidelines and Joint Commission International Accreditation (JCIA) standards. These standards are translated into clinical practice with the help of internationally trained experts in Quality and Patient Safety.

RMI has a quality department which oversees the entire organisation Quality and patient safety programme through different forums such as Clinical and Management committees.

Quality department conducts structured and unstructured training for RMI staff and limited external participants to learn and translate these standards into practice in the organisation and beyond.

## Medical Records

Electronic Medical Records have been maintained to improve access to patient information and designed to substantiate the effectiveness of medical care. EMR are also very helpful for review of hospital patient care, research, and formulation of new policies in light of past documented experiences.

Medical records are also coded in ICD (International Classification of Diseases) and CPT (Current Procedure terminology) coding system to be used for ongoing and future clinical research.



## RMI Clinical Trials Unit

RMI has the first of its kind Clinical Trials Unit (CTU) in the region with the goal to streamline, govern and promote clinical trials activities and to advance clinical research. CTU's aim is to develop a centre of excellence dedicated to advance research at RMI following the ICH-GCP guidelines. The research endeavors include industry and investigator sponsored Phase-III and Phase-IV trials, with Good Clinical Practice (GCP) compliance endorsed by Drug Regulatory Authority of Pakistan (DRAP) and international regulators as required. The trial unit is staffed by a robust team equipped with the latest knowledge, training, and tools to conduct clinical research.



Scan to Visit Website





TRANSFORMING  
HEALTHCARE

## POSTGRADUATE MEDICAL PROGRAMMES

# RMI

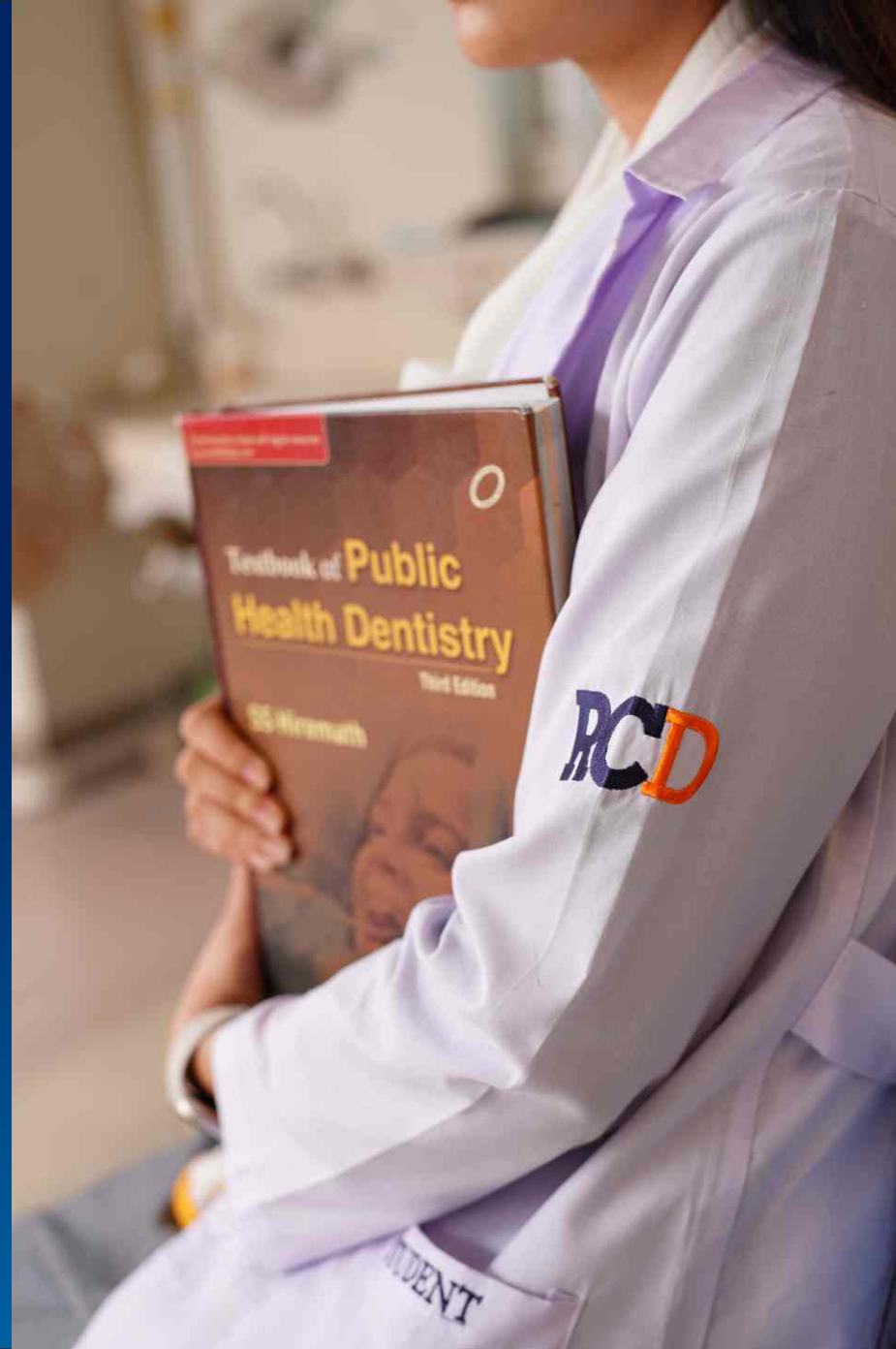




# OVERVIEW

RMI has a history of excellence in medical care and education since its inception. We have been offering a wide variety of Postgraduate training programmes since 2006 under the supervision of renowned and competent physicians and surgeons from all over Pakistan. Our teaching hospitals meet all the criteria set forth by the College of Physicians and Surgeons of Pakistan (CPSP), in accordance with PMDC policies.

The postgraduate training of our young doctors is designed to nurture future specialists who display the highest standards. These specialists will not only be highly accomplished clinicians but also skilled medical educators, leaders, critical thinkers, and researchers of international standards.



# VISION

To provide training of the highest quality and to produce doctors and dentists capable of serving the community with empathetic, evidence-based healthcare.

To emphasise not only imparting medical knowledge and skills of the highest standards but also inculcating ethical and professional values in our future clinicians, teachers, and researchers.

# GRADUATE OUTCOME

To establish the highest level of specialist training for doctors and dentists who exhibit competency, professionalism and leadership at par with international standards.

# GOVERNANCE

Dean RMI Postgraduate Education is the academic head of the Institution and oversees the various training programmes. He formulates the policy for induction, smooth conduction of training aligned with the vision and outcomes of both Institute as well as the Degree awarding entity and PMDC standards.

He ensures trainee wellbeing and supports them to achieve their goals. The training oversight committee is chaired by the Dean that has relevant representation of trainers, trainees and hospital administration. Dean facilitates accreditation of new specialties and supervisors by closely working with the HoDs and Consultants.

All the departmental HoDs, supervisors and trainees work as a team. CEO meets the Dean every three months and is presented with a report on all trainee related matters and future plans.





# ACHIEVEMENTS

We have an impressive track record of our trainees passing the exams. In addition to their mandatory dissertation, they excel at research and have many publications, both National and International, to their credit. RMI trainees are well received when they apply for specialist positions locally or abroad. Many of our alumni have progressed to achieve positions in prestigious organisations around the globe, and have been offered attractive positions in the US, UK, Australia and Middle Eastern countries, while others have successfully rejoined their Alma Mater as Consultants or other higher positions.

# ACCREDITATION

Our Fellowship Members are accredited by the College of Physicians and Surgeons Pakistan since 2006, as per PMDC policy.

Currently there are 52 CPSP Approved Supervisors for postgraduate training in RMI.

# FCPS

Following Specialties in RMI are CPSP accredited, as per PMDC policy.

- Anaesthesia

Cardiac Surgery

Cardiology

Cardiothoracic

Chemical Pathology

Gastroenterology

General Medicine

General Surgery

Hematology

Histopathology

Microbiology
- Nephrology

Obstetrics & Gynaecology

Operative Dentistry

Oral & Maxillofacial Surgery

Orthodontics

Orthopedics, Paediatrics

Periodontology

Prosthodontic

Pulmonology

Radiology

Urology

# MCPS

- Anaesthesia

Family Dentistry

Obstetrics & Gynaecology
- Paediatrics

Pulmonology

Radiology



# TRANSFORMING HEALTHCARE



# EDUCATION

# RMI



# RMI EDUCATION

The overall objectives of RMI Education to address the Vision, Mission, Values, and Goals set for individual colleges of RMI as per HEC and regulatory bodies education policies. According to these policies the educational programmes.

RMI Education has been developed within the ambit of RMI Memorandum of Articles of Association with the vision to produce competent graduates who shall merge instantly into the best global practices through excellence in education and training for its different programs.

The education policy follows guidelines of HEC, Affiliating University and respective regulatory bodies. Competency based learning outcomes shall be achieved by the graduates through providing opportunities to become fluent and current in knowledge, competent in skills, and humane in affect. An integrated curriculum shall be adopted for undergraduate programs where possible.

The current CPSP related postgraduate programmes follow their respective and approved trainings and assessment design.

RMI Education works in coordination with the RMI constituent colleges and departments to promote Academic Business, Implementation of Academic Regulations, Assess implementation of academic standards and updating Academic Programs.

Further to the above, RMI Education facilitates, Finance & Planning, Budget Control, Quality Assurance, Publication of Research Journals, co- curricular activities, Sports, and Alumni functions.



In addition, the education in RMI actively facilitates to are to follow competency-based curricula which include:

- Knowledge (disciplinary, interdisciplinary, epistemic, and procedural)
- Skills (Communication, Information and Communication Technology related, quantitative analysis, analytical and problem-solving, critical, and creative thinking, and learning to learn)
- Professional behavior (self-regulation, time management, integrity, intellectual curiosity, intellectual openness, etc.).
- Interpersonal attributes (empathy, self-efficacy, collaborations etc.)
- Encourage internalization in learning pursuits.
- Facilitate identification of specialization within the programme and future career paths by students.
- Prepare students to integrate and apply acquired knowledge, skills and affect in real life situations.
- Inculcate creativity and Research orientation in day-to-day education /Academic activities as well as to promote evidence-based practices.
- Assess students in all three learning domains (knowledge, skills and affect) through multimodal tools.
- Develop sense of Social Accountability as an essential professional attribute among students.



## Educational Strategies at RMI Academic Learning Facilities

- Small Group Format Sessions
- Large Group Format Sessions
- Demonstrations
- Tutorials
- Group Discussions
- E-Learning
- Clinical Skills Centre
- Clinical Rotations
- Case Studies
- Case Based Learning
- Student and Faculty Presentations Research projects
- Student-based Multidisciplinary Seminars Workshops
- Log Books Portfolios
- Tests and Assignments
- Performance based projects

## Practice Based Learning

This includes clinical rotations in various hospital departments, skill Laboratories, rotations in specialized technological skills as needed, and Physical Therapy department, and other learning facilities.

## Community Based Learning

To extend community-based learning to students of all programmes, RMI exposes students to various primary health care centres, schools, industries, and other health related community organisations.



## Academic Learning Facilities

Modern, air-conditioned classrooms, lecture halls and laboratories equipped with multimedia, latest equipment and all necessary learning materials.

- Information Technology Labs
- Online Learning Systems

**Moodle:** is a learning management system (LMS) used for learning and teaching purposes through its various provisions. It also helps faculty maintain a question bank for their respective subjects.

**SharePoint:** software for uploading learning and teaching material for students and data sharing.

**Zoom:** software for uploading learning and teaching material for students and data sharing.

## English Language Centre

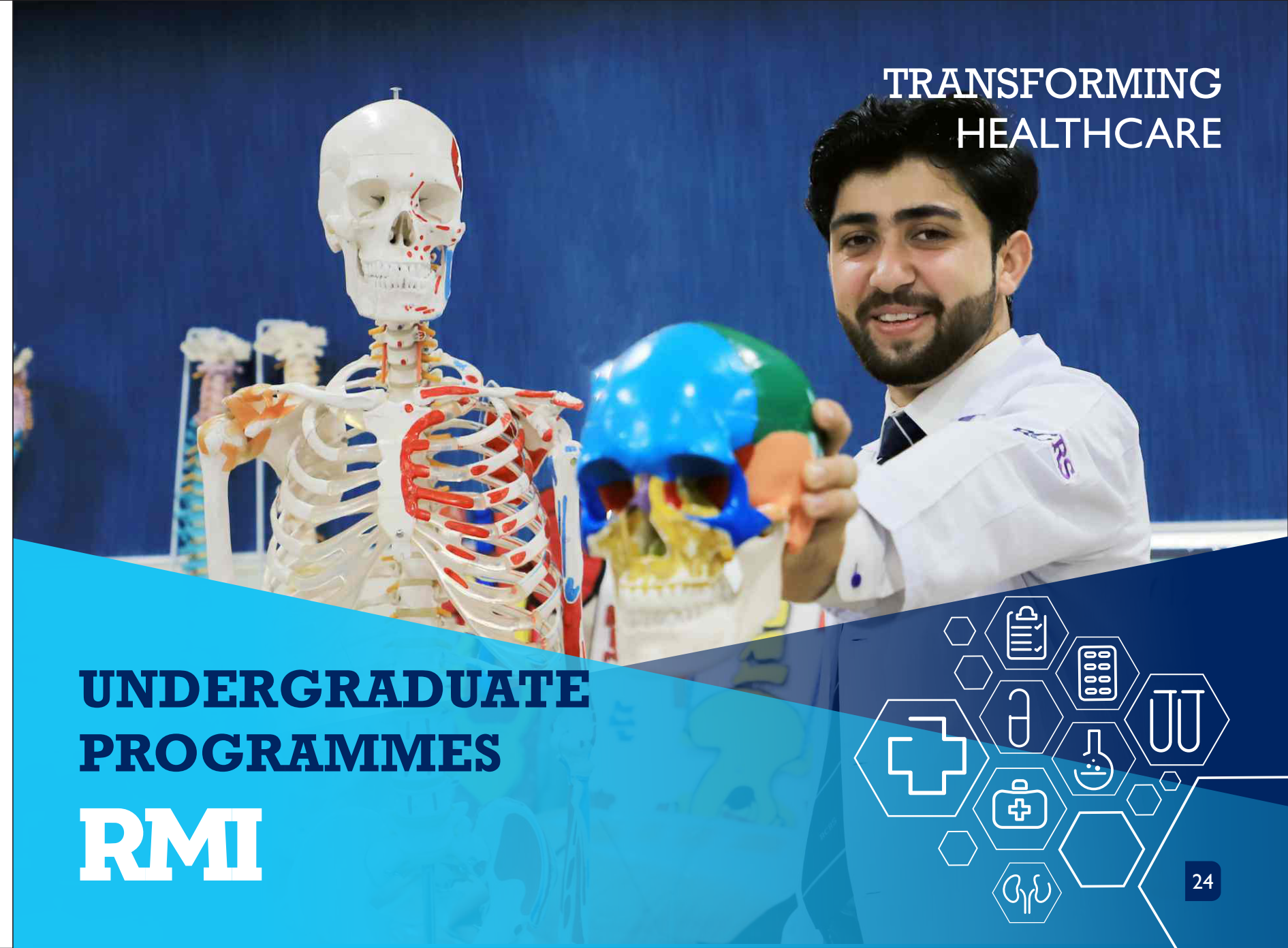
A special facility offered by RMI is its English Language Centre, in which professional courses of various levels leading to an overall command of language skills are offered. The ELC at RMI offers the services of faculty with knowledge, skill and ability to interactively teach elective English language courses. The ELC offers workshops and presentation on diverse academic and scholarly topics by experts in the field.

## Campus On Cloud

A highlight of RMI Education is the state-of-the-art Campus Management System implemented in all RMI colleges. It is named Campus on Cloud (CoC) and provides users and stakeholders with online access to student information such as admissions, attendance, time tables and grade records. It also has the ability to provide parents with online access to students' academic progress.



## TRANSFORMING HEALTHCARE



## UNDERGRADUATE PROGRAMMES

# RMI



# OVERVIEW

Selecting where to study for a chosen career is a life-transforming decision. The preference ought to be an institution with a high reputation that will provide an exceptional learning environment and bring out the best in individual and team talents. At graduation, a career path offering strong national and international options would justify the focused efforts of student life at RMI.

RMI has modern educational institutions with expert faculty and high emphasis on research in relevant fields so that everything is about providing quality education. Here one gets to study in a diverse environment and understand the variety and complexity of national and international health issues through resources, peers, technology, and state-of-the-art hospital facilities.

Professional exposure in an unparalleled modern clinical learning environment, enhanced by commanding technological support from a dedicated Information & Communication Technology (ICT) center, optimizes interactive E-learning to augment the sound scientific experience for students of RMI colleges.



# TIMELINE OF RMI'S EDUCATIONAL INSTITUTIONS

RCN Established in 2008	RMC Established in 2010	RCAHS Established in 2011	RCRS Established in 2012	RCD Established in 2016
<b>RMC</b> REHMAN MEDICAL COLLEGE <p>Rehman Medical College (RMC) was recognized by the Pakistan Medical and Dental Council (PM&amp;DC) in December 2010, and granted permission for admission of 100 MBBS students annually. The College and MBBS programme are certified by ISO 9001:2008 Quality Management Systems.</p> <p>The college is also registered and recognised by the Foundation for Advancement in Medical Education and Research (FAIMER, now part of the World Federation of Medical Education, WFME) since July 2012. RMC is included in the Directory of Medical Schools of World Health Organisation (WHO).</p>	<b>RCN</b> REHMAN COLLEGE OF NURSING <p>Rehman College of Nursing (RCN) was recognised by Pakistan Nursing Council in September 2008. The college offers two degree programmes i.e. Generic BSN and ost RN BScN and one diploma programme i.e. Certified Nursing Assistant (CNA).</p> <p>The college admits 80 students per year in Generic BSN, 50 students per year in Post RN BScN and 50 students per year in CNA programme.</p>	<b>RCAHS</b> REHMAN COLLEGE OF ALLIED HEALTH SCIENCES <p>RCAHS was established in 2011 and is currently offering the following 08 BS Degree (four-year) programmes:</p> <ol style="list-style-type: none"> <li>1. Medical Laboratory Technology</li> <li>2. Emergency Technology</li> <li>3. Surgical Technology</li> <li>4. Radiology Technology</li> <li>5. Cardiology Technology</li> <li>6. Anesthesia Technology</li> <li>7. Public Health</li> <li>8. Vision Sciences</li> </ol> <p>These programmes are affiliated with Khyber Medical University, Peshawar; 225 students are admitted in these programmes per year. The college also offers a two-year Diploma programme as Dental Surgical Assistant.</p>	<b>RCRS</b> REHMAN COLLEGE OF REHABILITATION SCIENCES <p>Rehman College of Rehabilitation Sciences (RCRS) was established in 2012 and offers two-degree programmes i.e. Five years Doctor of Physical Therapy (DPT) and Four years Bachelor of Science in Speech and Language Pathology (BS SLP).</p> <p>These programmes are affiliated with Khyber Medical University, Peshawar. The college admits 50 students per year in Doctor of Physical Therapy and 20 students in Speech and Language Pathology.</p> <p>RMI Education would like to provide opportunities to talented students across the country to be admitted in all the programmes offered by different constituent colleges. Scholarships shall be awarded to the Merit holders.</p>	<b>RCD</b> REHMAN COLLEGE OF DENTISTRY <p>Rehman College of Dentistry (RCD) was recognised by the PM&amp;DC in September 2017 and admits 50 students to the BDS programme per year. It is a state-of-the art college of dentistry established in 2016, offering high quality education and training facilities to dental students.</p>





# ADMISSIONS TO RMI COLLEGES

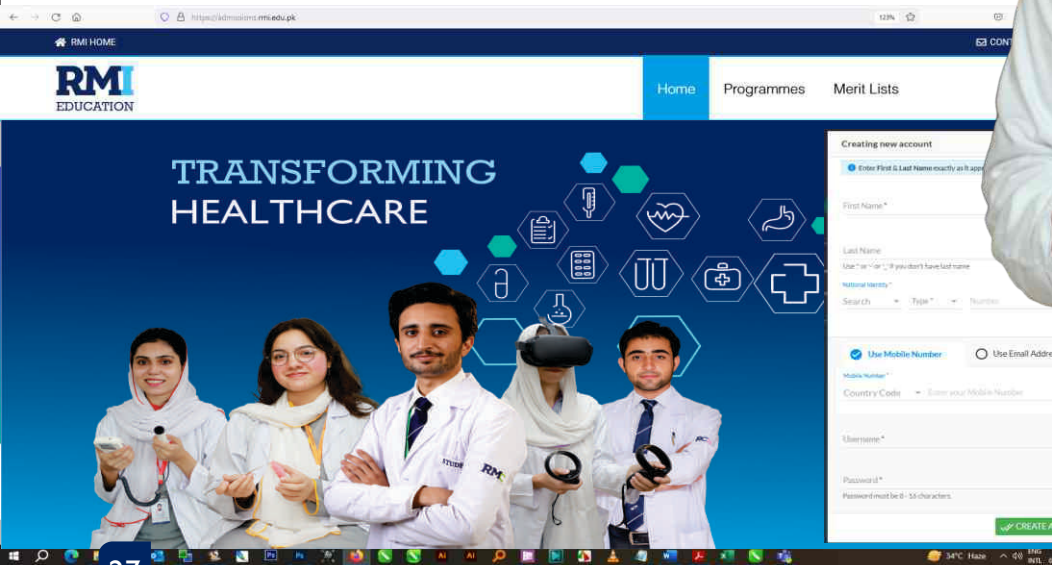
## Online Admission Portal

Admissions to RMI colleges have been facilitated through a single, central online portal that carries all the information needed to complete the admission process. Each college has its own individual sub-portal to facilitate specific admission requirements.

Applications through online portal shall be accepted for scrutiny and merit formulation by the individual colleges as per Admission policy for the year 2022-23 & instructions issued by the relevant regulatory authorities.

Admission requirements, Admission policy, requirements, and processes for each college are provided on respective college website:

RMI offers attractive scholarship and financial assistance to talented and deserving students under the following heads laid down in the policy documents.



## SCHOLARSHIP & FINANCIAL ASSISTANCE

Open merit seats. Scholarship will be subject to terms and conditions as notified in policy documents from time to time.

### Need Based Scholarship

The Scholarship is admissible to Pakistani candidates offered admission on open merit seats. Scholarship will be subject to terms and conditions as notified in policy documents from time to time.

### Performance Based Scholarship

Scholarship will be awarded to the student securing top 1st, 2nd & 3rd Position in University Annual/ Semester examination as per policy notified from time to time.

### Distress Scholarship

This scholarship will be awarded as a special consideration to those students who lose their parents / guardian subject to fulfillment of the requirement notified in the scholarship policy.

Fee Concession for Serving Employees and their Dependents:

Applicable as per policy.

Free / Concessional education to children of deceased RMI Employees:  
The students of the deceased RMI employees may be granted full or partial concession in tuition fee as per policy





# LIBRARY RESOURCES

## Central Library

A spacious (12,137 sq. ft.) air-conditioned library with more than 200 seating capacity is available to students, faculty, researchers, and other authorised users. The library adds new titles and updates its collection regularly to enhance learning resource. The library is managed by a team of dedicated, qualified, and experienced staff; the library is open till 10 pm on working days.

Library is equipped with facilities like:

- ▶ Text Books
- ▶ Journals/Articles
- ▶ Electronic educational database
- ▶ Internet Access
- ▶ E-library

## Study Sections For Readers

- ▶ Main Hall For All Users
- ▶ Self-study Hall
- ▶ Reference Resource Area

## Print Material Resource

### Books

More than 8600 text, reference, and general

### Medical Journals

A large number of research journals are subscribed in addition to free medical journals Magazines & Newspapers besides health-related resource, a substantial volume of reading material on general education is also available.



## Information Technology Based Self Learning Resource Centres (SLRCS)

- ▶ Two laboratory areas equipped with 72 computer systems, high-speed, free internet facilities, and Wi-Fi
- ▶ Multiple group training facilities including Multimedia, projection screens, headsets, etc.

## Library Service

- ▶ Circulation Services
- ▶ E-library Services
- ▶ Internet and Intranet Services
- ▶ Lending Services
- ▶ Library Orientation Services
- ▶ New Arrivals and Contents Alert Services
- ▶ Online Public Access Catalogue (OPAC)
- ▶ Photocopying/ printing Services
- ▶ Reference and Customer Service (Document Delivery)
- ▶ Serial Services
- ▶ Inquiry and Advisory Services

## Library Management System

Central Library is run through a Web Based Library Management System (KOHA) that provides online access to users

## Digital Library

- ▶ This Library provides students access to various resources in a research-oriented environment. It also has access to the HEC Digital library that provides full text access to journals and E-books.
- ▶ The E-library has an extensive collection of CDs / DVDs for faculty and students. We strive to provide quality information available in digital format to users.

## D-Space Repository

- ▶ Academic Record / Syllabi of all programmes
- ▶ RMI Journals /Articles
- ▶ E-articles

## Turnitin

Turnitin similarity software is available to students, faculty, and healthcare providers through trained instructors.

Facilitation is provided through active and integrated management in this context.





TRANSFORMING  
HEALTHCARE

**CAMPUS FACILITIES  
FOR STUDENTS**

**RMI**





# Campus Facilities

- ▶ Student Lounges / Lockers
- ▶ Book Shop
- ▶ Sports Centre / Gymnasium
- ▶ Student Accommodation
- ▶ Transport
- ▶ Food Services: Cafeteria / Tuck Shops

# Student Support Services

RMI colleges provide comprehensive and facilitative student support systems that include the following services.

# Hostel Facilities

Hostel accommodation is provided to outstation students subject to availability.

# Medical Facilities

Preliminary diagnostics are performed to assess the health conditions of students at the time of admission. All students have access to compulsory health insurance as per regulatory bodies' policies.

# Student Counselling

The Student Counselling Service has been established in the Colleges since inception. It plays an important role in addressing the students' relevant concerns regarding their academic oriented, personal, and psychological issues.

The service includes a Psychologist and assigns faculty members. The psychological assessment of students at entrance level have been conducted to provide a useful baseline for the admitted students. The student career counselling is also done by mentorship as well as sessions arranged from time to time in this respect.

# Student Complaint Resolution Service

The student complaints are addressed through Complaint Management Committee, Grievance Committee, and Anti-Harassment Committee, as the case may be.



# CO-CURRICULAR & RECREATIONAL ACTIVITIES

A multifaceted personality requires development of mental, social and communication skills. At RMI, they are achieved through elaborate structured participation in various co-curricular activities such as debates, quizzes, fairs, study and excursion trips, seminars, conferences and workshops on a variety of topics throughout the academic year.

Students are not mere observers but are encouraged to take active participation in these activities.

The following societies are functioning actively to achieve the above objectives:

# Sports Health & Wellbeing

Healthy Body has a healthy mind. Sports are considered to be an essential part of the student training program. A well designed, equipped and managed sports center is functioning actively with scheduling specified for all colleges Male & Female students. A full-time sports coordinator is employed for the purpose. In addition, a regularly functioning Health Fitness club is available, having a modern well-equipped gymnasium and professional fitness facilitators.



## Live Skills Grooming

Live skills grooming of the students is an essential component of training in behavioral sciences of each educational program. It includes ethics, professionalism, communications, teamwork, social responsibility, motivational activities, etc.

## Spiritual Mentoring

Islamic Studies and Tajweed ul Quran classes are examples of spiritual mentoring at RMI Educational Institutions.

## Executive Training & Development

RMI exerts special emphasis on providing executive trainings to its senior employees and faculty in variety of fields through its specially placed training and development center under the auspices of Human Resource Department.

## International Health Days

Important International Health Days are celebrated with enthusiasm and the messages, themes and importance of the days are highlighted through presentations, videos and walks.

RMI institutions hold their own important events and days related to their professional academics in collaboration with local and international organisations.

# ACADEMIC OFFICES

## Office of Admissions

It works under the Central Admission Committee (CAC) and facilitates admissions to all programmes, utilizing online admission portal, campus on cloud services, and manual inputs. All admissions are done in line with admission policies of different colleges which are developed yearly according to regulatory bodies requirements.

## Office of Quality Enhancement

Quality Enhancement Cells at RMI Education and in individual college are operating to monitor the quality of education provided. Contributory factors include competence of faculty, students' perceptions on teaching & learning, courses evaluation, infrastructure & facilities, learning environment, strategic planning, etc.

The service provision is to ensure constant quality enhancement of academics through evaluation based on standardized surveys.





# COMMITTEES

## Curriculum Committee

The Curriculum Committee is constituted to ensure that there are mechanisms for direct faculty involvement in decisions related to the educational programme and its delivery and evaluation.

It is chaired by the principal and includes year chairs, members from basic and clinical departments, and representatives of department of medical education, behavioural sciences, administrative staff, as well as medical students.

It's mandate is to advise on the design, implementation, monitoring and evaluation of curriculum, instruction & assessment of educational programmes at RMI that are consistent with current standards of medical education in concurrence with RMI management.

The committee shall also design, implement, and monitor an undergraduate research curriculum in line with national and international standards.

Curriculum committees design and develop curriculum and assessment with assistance from DME and other departments as per criteria defined by regulatory bodies

## Disciplinary Committee

The Disciplinary Committee investigates and formulates recommendations on the disciplinary cases.

Principal of college constitutes the disciplinary committee with clear Terms of Reference of conducting enquiry. The committee comprises of any three members from the academic departments (depending upon nature of the case) for investigation into the matter and submission of recommendations.

## Research Advisory Committee

The committee consists of senior faculty researchers of basic and clinical departments, with the mandate of acting as a counseling and advisory body for all aspects

of medical research. Members provide consultation on an individual or collective basis, as needed.

## Student Reward Committee

The Student Reward Committee nominates deserving candidates for awards in different categories for their meritorious efforts in line with college policy.



## RESEARCH

Research is an institutional forte executed through a structured programme established since inception to induce research culture amongst students and faculty. The mandatory research activities include training students in basics of research including methodology, data collection and its analysis and interpretations, etc., by undertaking research projects.

The curriculum of all programs includes incremental training sessions in research extending from first to final professional years. The students are expected to complete research projects that are publishable. The institution facilitates the dissemination and publication of research output.



## DAANISH: RMC

The student magazine 'Daanish' is published regularly and is managed by student editor(s) under the supervision of senior faculty members. This magazine aims to provide opportunity to students and faculty to demonstrate their creative writing skills and co-curricular achievements.

## HEWAD: RCN

Creative writing skills is something that students and graduates of most health disciplines generally struggle with. In order to promote creativity and enhance writing skills of the students, an RCN magazine 'Hewad' provides an opportunity to improve the skills by writing different articles and essays.

## SHAHEEN: RCD

RCD magazine, Shaheen provides a platform for the presentation and preservation of the creative ideas of our students. It comprises of multiple section that include Urdu literature, English literature, Pashto literature, scientific/Medical section, and Arts section for the students to present their talent and skills in the field of literature and Arts.

## KAMISH: RCRS

The idea of KAAMISH was put-forward to help students in providing them a platform where they can advance their creative thinking and reasoning. The magazine not only reflects the creative abilities of our students but provide recognition to the College for its continuous support and encouragement towards personal growth of students.

# STUDENT MAGAZINES



## IBN E RUSHD: RCAHS

Rehman college of Allied Health Sciences magazine "IBN E RUSHD" started in 2019.

The main aim of this magazine is to give opportunity to RCAHS Family that is comprised of RCAHS students and faculty members to share their creativities and reflections. This will help in dissemination of information among professionals. It contains articles, Essays, Poems, Sketches, Photographs and short stories drafted by students and faculty members of RCAHS.





Research is made meaningful by dissemination through media and journals. Although the faculty has been publishing its research in a wide variety of national and international journals, RMI embarked on publishing its own scientific journals since January 2015.

The details of research journals published in the institution is provided in next page:





## Journal of Rehman Medical Institute

[www.jrmi.pk](http://www.jrmi.pk)

The Journal of Rehman Medical Institute (JRMI) is an official publication declared by the Government of Pakistan in 2015, and is published on a quarterly basis from 2016 onwards. All biomedical publications are accepted, following the guidelines of the International Committee of Medical Journal Editors (ICMJE; [www.icmje.org](http://www.icmje.org)) and the Committee on Publication Ethics (COPE; [www.publicationethics.org](http://www.publicationethics.org)). Both online ([jrmi.pk](http://jrmi.pk)) and print versions are published by a dedicated Editorial Board under the guidance of Chief Editor, Professor Tariq Mufti. The journal has been recognized by HEC in Category “Y”.

## Journal of Medical Students

[www.dstudents.pk](http://www.dstudents.pk)

The Journal of Medical Students (JMS) is being published since 2015. It is an online and print journal ([jmedstudents.pk](http://jmedstudents.pk)) given official declaration by the Government of Pakistan. Being an international open access peer-reviewed journal with student editorship, it follows the guidelines of International Committee of Medical Journal Editors (ICMJE) and the Committee on Publication Ethics (COPE). Medical students from all over the world are encouraged to submit original articles, review articles, case reports, short communications, editorials and proceedings of medical conferences. A General Section allows publication of student articles of medical interest that may not be based on original research.

## Rehman Journal of Health Sciences

[www.rjhs.pk](http://www.rjhs.pk)

RMI Allied Health Colleges embarked on publishing its own biannual scientific Journal since January 2019. Rehman Journal of Health Sciences is an official publication declared by the Government of Pakistan and is published on a biannual basis from 2019 onwards. All publications regarding Rehabilitation Sciences, Nursing, Health Technologies, and Biomedical Sciences are accepted, following the guidelines of HEC. Both online ([www.rjhs.pk](http://www.rjhs.pk)) and print versions are published by a dedicated editorial board. The journal has been recognized by HEC in Category “Y”.

## Journal of Rehman College of Dentistry

[www.jrcd.pk](http://www.jrcd.pk)

The Journal of Rehman College of Dentistry (JRCDD) is a peer reviewed, open access journal for the dental community. It supports dissemination of scientific innovations, clinical and experimental research within dentistry, and its related fields. JRCDD also encourages interdisciplinary research across multiple fields.

## RMI ALUMNI

Graduates of RMI colleges are performing exceptionally well in their academic and health-related practices. Alumni Associations of different colleges are functional. Alumni are connected with Alma Mater through the unique ID that was allotted to them as students. The Marketing Department remains in communication with alumni at different occasions. The alumni input is appreciated and given special value.





# RULES & REGULATIONS

(Applicable for all RMI colleges. Rules and Regulations of Regulatory Authorities may supersede these rules, where applicable.)

## General / Disciplinary Rules

1. In dealing with any breach of discipline, infringement of any of the rules and regulations, the concerned authorities of the institutions may take disciplinary action deemed appropriate including fine, suspension, rustication, or expulsion.
2. Students are to observe discipline while in the college and hospital premises during or after the College hours.
3. Students found indulging in acts such as loitering, making noise, sitting on stairs or places other than allocated areas, wall chalking, putting posters in unauthorized areas or any other acts deemed unbecoming by college authorities shall be liable to appropriate disciplinary action.
4. Students will not bring any outsider to the School/ College, except parents / guardians who under exceptional circumstances can visit the administration. They will be issued temporary ID cards and will be permitted only in the designated area.
5. Any student breaking or damaging any college or hospital property shall be required to pay the cost of repair or replacement; in case of willful damage appropriate disciplinary action will also be taken.
6. Mobile handsets are not allowed during College hours.
7. No student in the College shall be permitted to have any connection with a private dispensary or a consulting room to pose or work as medical practitioner.
8. Students are strictly prohibited to keep firearms and other weapons in their rooms or on their person. The possession/use

of narcotics is strictly prohibited. Anyone found in possession of or using narcotics, firearms or any other weapon of assault will be expelled from the College immediately. In case of suspicion any room or person can be searched without prior notice.

9. Students must keep the working areas tidy.
10. Safety measures for handling acid or other injurious substances, etc. are to be strictly followed.
11. All accidents have to be reported to the authorities immediately.
12. The College, hostels and hospital premises are No Smoking Areas.
13. All irregularities, negligence of duties, breach of discipline and actions taken are to be brought to the notice of the Principal by the teacher.
14. Any complaint(s) by students will be examined by concerned Head of department.
15. Any student desirous of communicating with the Principal for any matter may do so by making a formal request through the Student Affairs Office.
16. Joint representations by students are entirely prohibited and will not be entertained.
17. The authority may expel a student at any time if it is not satisfied with his /her health, conduct or character.
18. Parents / Guardians are expected to co- operate with the authorities of the College by prevailing upon their children / wards not to take any part in anti- institutional activities.
19. It is desirable for students to engage themselves to reasonable extent in wholesome co-curricular activities such as authorized sports and literary pursuits during leisure time.
20. No unauthorized game is to be played in the College or hospital premises at any time.
21. Any student of the College who indulges in political activities or other unbecoming acts of a student will be liable to appropriate disciplinary action.
22. No person shall be invited to address a meeting or society in the College premises without prior permission of the Principal. In all cases, the chair shall be occupied by responsible person approved for the purpose by the Principal. The subject of debate / address shall be fixed after obtaining the approval of the Principal in advance.
23. No student shall address a press conference, nor write to the press on political or related subject or matters concerned directly with the administration of the College, University or any Government or Educational Institution in Pakistan or abroad. No poster or banners shall be put up without the approval of the Principal.
24. No society may be set up by the students nor any meeting held in the College premises without the written permission of the Principal.

## Attendance And Punctuality

- Every student is required to attend punctually at the hours notified for lectures, demonstrations, seminars, tutorial classes, practical, hospital teaching and all tests and examinations.
- Every student is required to attend at least 75% of the lectures, seminars, tutorials, practical and clinical duties of each subject in each class, failing which his/her name shall not be forwarded to the Controller of Examinations, KMU for the purpose of examination. It applies also to students who are readmitted after failing in any of the examinations.
- The remaining margin of 25% of absence in theory lectures, demonstrations, and in hospital teaching, and other teaching assignments, is intended to cover absence only on account of sickness or special emergency considered justifiable by the Principal. No student is allowed to leave any teaching session without permission of the teacher until the session is over.
- Students are not permitted to remain in the lecture rooms, auditoriums, tutorial rooms, laboratories or hospital wards except at the prescribed hours of lectures.
- Repeated absence from lectures, practical classes, seminars, tutorials, demonstrations and hospital wards for two weeks without valid reasons will make a student liable to be expelled from the College.
- Clinical students shall be required to do hospital work during vacations, if necessary.

## General Student Conduct

- All students will present themselves with dignity befitting their status as mature, law abiding and responsible persons and show tolerance toward religious, ethnic, social and other differences.
- Students will refrain from any activity which is subversive of discipline and/or brings the institute into disrepute.
- Students in all settings on campus are expected to dress in a simple, decent and appropriate manner.
- Students individually or as a group will refrain from engaging in any activity which hinders or prevents the participation of another person or group of persons in any of the activities of the institute.
- Students will ensure that their actions do not in any way threaten or endanger the health, safety or security of other persons or imperil the latter's properties.
- Students will refrain from any behavior which will cause damage to institute property.

## Student Outfit

Each RMI college has its own officially approved outfit which the students must follow.

Students must:

Wear the prescribed dress within college and hospital premises (including extra classes, class tests, examinations and official visits).

Display their Identity cards visibly on their white coats. Violation of outfit code shall subject students to disciplinary action.

## Leave

- Students absenting themselves from the College or Hospital work shall be liable to a fine imposed by the Principal.
- A written application should be sent to the Principal/Director by the student or his / her parent or guardian, reporting his / her illness or cause of absence.
- In all cases, leave taken will be at students' own risk as far as percentage of attendance is concerned. Even medical certificate will not condone a deficiency in attendance (defined as more than 25% absence; (see above):
- Attendance and Punctuality, item 3). Sick leave even if sanctioned on medical certificate leading to absence in an examination will mean failure in that examination.
- All sick students should report to the specified outdoor clinic attached to the College before attending any other clinic. For sick leave recommended from outstations, the documents shall have to be verified by the clinic attached to the College.





## Infringements of Student Discipline



Without prejudice to the generality of the provisions of the Student Code of Conduct, the following conduct by students will constitute a disciplinary infringement:

1. Repeated failure to conform to scheduled instruction, practical work, examination, clinical assignments and/or coercing other students to act likewise.
2. Any form of intimidation, insult, abusive language, assault, molestation or harassment of students, staff, faculty, patients or other clients, within or outside the institute.
3. Any form of unauthorised picketing, rallies, demonstrations or organised obstructions of any student / Institute / Hospital functions in any manner whatsoever.
4. Any attempt to conceive, design or affect any plan of whatever nature

whose object or consequence is to disrupt academic programmes of the Institute or its operations.

5. Malicious acts, theft, willful damage or misuse of Institute's or any third party's property.
6. Failure of students residing or availing the hostel and its facilities are to comply with all the hostel rules and conduct themselves in a manner that respects the rights of other resident students, faculty and staff of the Institute.
7. Unauthorised housing of persons in the hostel or other buildings at the Institute.
8. Cheating, plagiarizing, and or use of other unfair means in examinations or any other academic setting.
9. Procurement, possession, use, sale, and consumption of banned drugs, alcohol or other contraband items on campus or at Institute related events.
10. Any act of violence causing injury or damage to any person or property at the Institute.
11. Providing wrong information, giving false and / or fabricated evidence, deliberately concealing material facts or information to the Institute in any proceedings and inquiries carried out at any forum by the Institute.
12. Committing or involvement in any act of deceit, fraud, forgery with the Institute, students, staff or faculty.
13. Abuse, unauthorised or fraudulent use of Institute computers, network systems or computer files.
14. Failure to comply with or any act in violation of, contravention of or disregard for published Institute policies, regulations or failure to comply with the direction of Institute officials acting in performance of their duties.
15. Any act prohibited and / or not permitted under any law of the country where the Institute is located.
16. Frequent failure to meet the student's academic or financial obligations to RMI and knowingly to violate agreements reached at the time of admission by the students with the institution.

## Proctorial Boards

Proctorial Boards are constituted for each educational institution of RMI separately in order to maintain proper discipline on the campus. Boards are composed of Chief Proctors, Staff Proctors and Student Proctors (male & female) from each class.

Rules and regulations are framed & are meant to be implemented & strictly observed in order to maintain a disciplined atmosphere. The Proctorial Board takes prompt action in case of misconduct and recommends appropriate punishment (i.e. fine, suspension, expulsion, rustication) for students found guilty depending upon the seriousness of the offence. It also takes all preventive measures against ragging.





# Admission Fee & Refund Policy

1.

The fee and dues will be charged from each student irrespective of his/her year of admission as per regulations / notifications issued from time to time. All fee and dues of the First Professional / Semester year must be paid on or before the stipulated date, otherwise the admission will be canceled, and seat will be offered to the next candidate on merit list.
2.

Full fee / dues for subsequent semesters / academic years shall have to be deposited by the students at
5.

The registration / enrollment / examination fee etc. of University and other regulatory Body is subject to change by the respective university/ Body from time to time, which will be applicable and payable by the students.
6.

The Basic Medical Coverage (Health Insurance) of

of college facilities including Internet, Zoom, Share Point, Online Classes, Library etc. & sitting in examinations. The Principal concerned will issue / serve notices to the defaulting students and their parents using all means of communication duly endorsed by the finance department. Readmission will only be allowed after payment of all dues including fines, as notified by the Principal.

for inflation/ increased expenses per annum or charge any additional fee charges on annual basis, which shall be binding on the students. Failure to pay such amount by a student on or before prescribed date shall render the student to be struck off from college.

9.

The student who is detained or has failed to pass the examination shall have to pay the prescribed fee and other dues in full for the class in which he/she fails and must re-enroll as per rule of the college/regulatory body.
10.

The College Registration / Admission fee is non-refundable in any case. If an admitted student wants to cancel his/her admission, the refund shall be

**Refund of fees for AHS Colleges Students is as follows:**

- 100% within 07 days from the date of commencement of the classes
- 75% within 15 days from the date of commencement of the classes
- 50% within 21 days from the date of commencement of the classes
- 25% within 28 days from the date of commencement of the classes
- MBBS / BDS students will be dealt with according to PMDC admission regulations

3.

All students must pay their fees / dues within the stipulated period as defined in Para 2 above. In case a student fails to deposit the fee/dues etc. within the stipulated period, a grace period of fifteen days will be given with fine as determined by the Principal till the date of payment.
4.

After the expiry of the said grace period with the fine mentioned in Para 3 above, the student will be debarred from the classes, banned to avail any sort

students is mandatory as per choice of student. If students opt to avail the said benefit from College designated insurance company the amount of premium will be payable along with the college fees/dues by the students.

7.

Security (refundable) as notified separately, College Dress charges, Degree fee, Medical examination fee/charges & Regulatory Body/ University charges, will be charged separately as per actual cost and to be paid by the students at the time of admission.
8.

The Colleges reserve the right to revise any fee, incurring expenses under various heads to cater

made after submission of a written application on a judicial paper worth Rs. 100/-, duly countersigned by Notary Public. The amount of refund will be as per PMDC / College regulations for all AHS colleges students & PMFC regulations for MBBS/BDS Students.

11.

In case an admitted AHS student leaves the college before completion of his / her prescribed degree course, he / she shall be liable to pay the surety bonded amount reflected in the undertaking submitted by the student at the time of admission as compensation / liquidating damages. The MBBS / BDS students will be dealt with according to PMDC admission regulations.

# TRANSFORMING HEALTHCARE



# EXAMINATION RULES

RMI



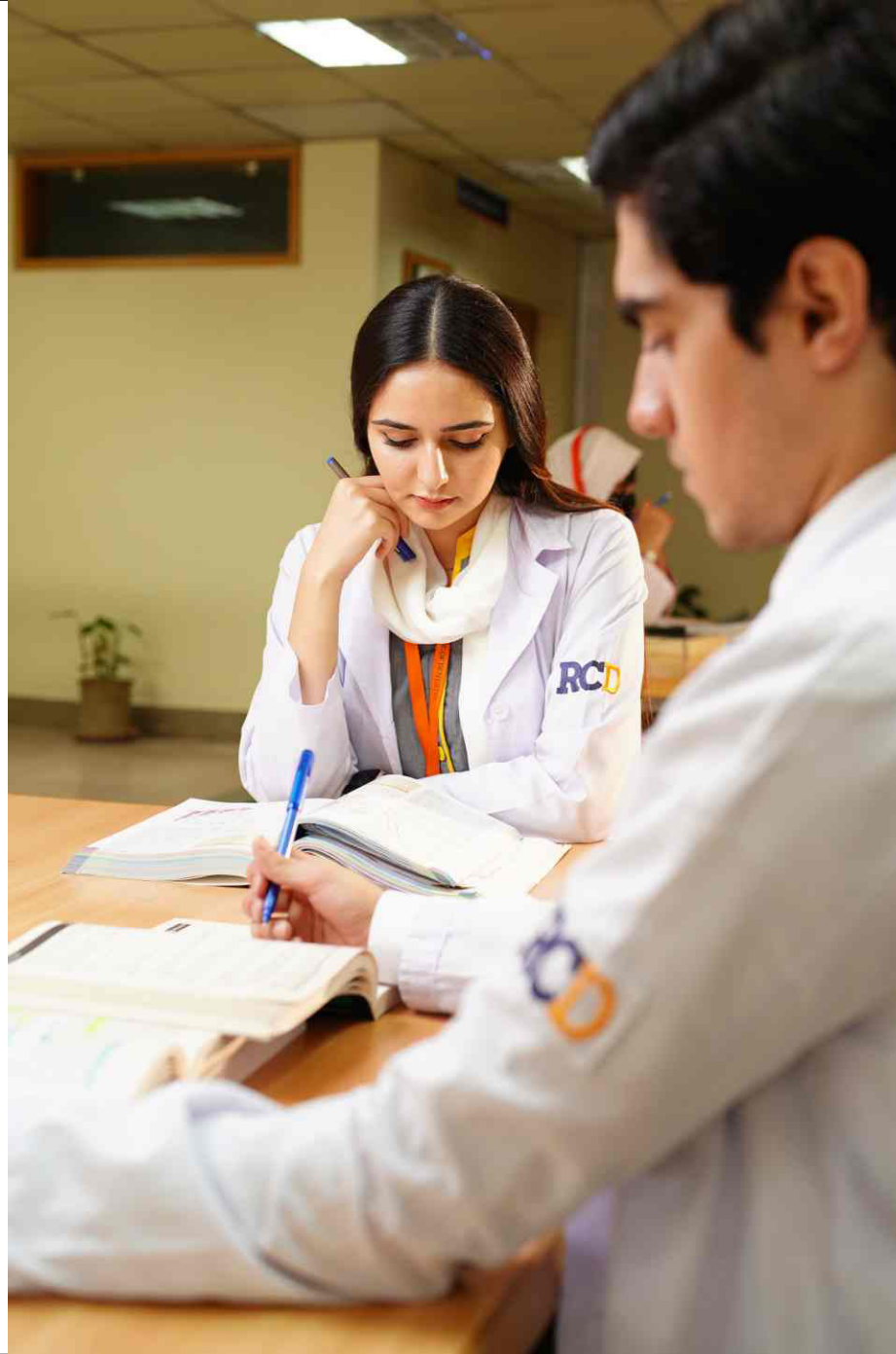


# Examination

Both the summative and formative evaluation of students' performance is a part of the learning process and is carried out step-by- step to determine whether the curricular objectives have been achieved or not.

The Grade Point Average (GPA) calculation system is followed in the tests and final examination.

1. Regarding examination all the necessary information is given to the students prior to the exam.
2. If a student arrives within the first half an hour in internal exam, he/she will be admitted but will not be allowed any extra time.
3. Similarly, if a student fails to attend midterm exam, He or She should immediately provide a written explanation with evidence.
4. Students must reach the examination hall at least ten minutes before the scheduled time. No additional time shall be given to students arriving late for completing their examination. Once students enter the Examination Hall, any kind of discussion, gesturing, eating, etc., are strictly prohibited.
5. Students are not allowed to bring mobile phone and any other unauthorized electronic gadgets and devices in the examination hall. Possession of any such device or gadget can lead the student to Unfair Means Case as well as confiscation of the device.
6. Students must bring their admit cards and student ID cards to the examination hall.
7. Lending/borrowing of pen, pencil, ruler, calculator, etc., is strictly prohibited in the examination hall.
8. Students cannot leave the examination hall without prior permission of the invigilator.
9. Any student using abusive or obscene language or found misbehaving with the invigilator or any other person in the examination hall shall be dealt with under disciplinary rules.
10. Students must not forget to mark their attendance on the attendance sheet during the examination. In case the name is not listed, it should be reported to the invigilator immediately.
11. **E-ASSESSMENT:** RMC and RCD have incorporated online formative assessment for all professionals. There is now online summative assessment through Moodle quiz & assignments. All assessment results are generated online and shared with students and teachers.



# Eligibility & Rules For Examination & Assessment

A student shall be eligible to appear in a professional examination if he/she fulfills the following conditions of University Examinations

1. Has undergone the specified period of theoretical and practical courses and clinical training including demonstrations for the said examination to the satisfaction of the department concerned. The 'satisfaction' is measured through structured, recorded internal assessment programme in case of RMC. A student can be stopped by the College authorities from appearing in the University examination on account of poor academic performances (less than 25% cumulative marks in internal assessments in a particular subject).
2. No student shall be eligible for university examination without having attended cumulative 75% of the total of lectures, demonstrations, tutorials and practicals, clinical work (both in-patients and out-patients) and other assigned academic tasks. Extra coaching classes or clinical rotation duties that are meant to benefit students beyond the laid down schedule of studies shall not carry any attendance weightage. Cumulative attendance of the respective subject spread over the different professionals shall be counted towards final attendances before the university examination of the subject.
3. Has passed all the prescribed subjects of the previous professional examinations in line with regulatory authorities' guidelines.
4. Has satisfactorily undergone the prescribed courses in theory, practical and clinical work extending over a period of three years after passing second professional MBBS examination before appearing in Final Professional examination.
5. Has his/her name submitted to the Controller of Examination by the Principal after clearance by the Head of Department / teacher concerned.
6. Has paid the requisite fees for the examination to RMI colleges, cleared all the Colleges/hostels dues (including fines, library books and borrowed teaching materials, etc.), and fulfilled other obligations of the concerned departments appearing on the Annual Clearance Form available with the Student Affairs Offices.



For all internal assessment examinations purposes, the minimum passing marks in each subject shall be 50% in theory and practical examinations separately. A student who fails in theory or in practical examination of a subject shall be considered to have failed in full subject, both theory and practical.

Any student who fails/is detained in a professional examination, both in annual and supplementary in any subject shall not be promoted to the next class. He/she shall undergo the course of studies in the subject(s) in which he/she failed/detained. There will be no provisional promotion in such cases.

A student, who fails in one or more subjects, shall reappear in the subjects in which he/she has failed. A student who reappears in any professional examination shall pay requisite fee for the examination.

A student who is eligible to appear in the examination but did not take examination for whatever reason shall be considered to have failed.

The relevant examination rules for each college will be applicable as per their examination system and the regulatory bodies' guidelines.

Only two examinations, one Annual and one Supplementary are allowed in one academic year. No third or extra supplementary examination is permitted.



## Internal Assessment Regulations

All rules, regulations, and protocols shall be followed as per regulatory bodies' requirements. RMI colleges follow the internal/external assessment weightage rule of KMU. Continuous internal assessment consists of evaluation at the end of each assignment, e.g. Fortnightly / End of Module / Mid Term / End of Session written and practical examinations, attitudinal assessment from educational and/or clinical supervisors, clinical skill assessment from clinical supervisors, and Year's work books (portfolios, logbooks, etc.)

Assessment of Knowledge, Skills and Attitude contribute towards internal assessment.

Methods used to assess these domains include Multiple Choice Questions, Short Answer Questions, Oral / Viva and Practical / Clinical and tutor evaluation for conduct / behavior.

Awards of internal assessment in all the subjects of each candidate are submitted to the Controller of Examinations along with Admission Forms for the annual examination.

The marks of internal assessment are submitted once a year / semester prior to annual / semester examination.

Proper records of continuous internal assessment are maintained by respective departments of RMI colleges.